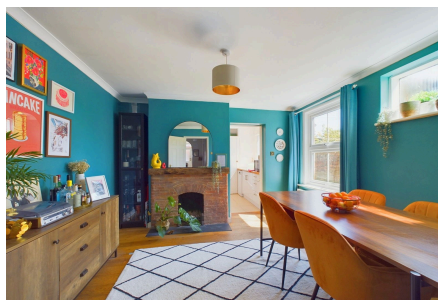


Norfolk Road, Horsham

Offers Over £325,000

🛏️ 2 🚿 1 🚗 2

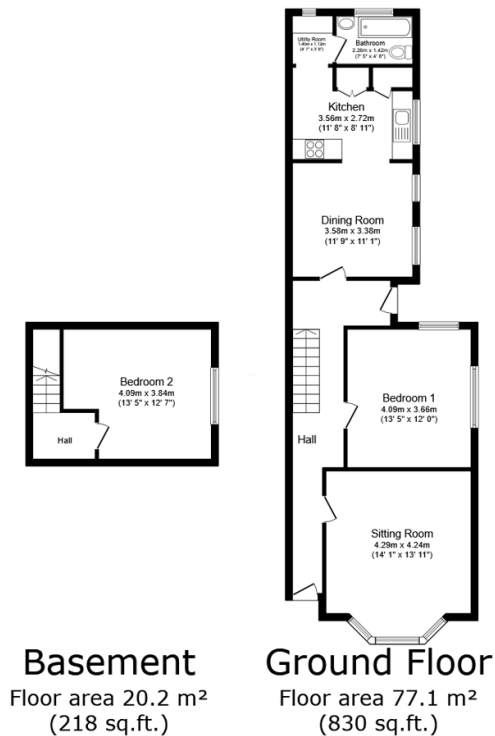


A large split level period conversion apartment boasting over 1000 SqFt of charming accommodation, including two separate Reception Rooms, a Courtyard Garden and two parking spaces.

Tenure: Share of Freehold
Council Tax Band: D
EPC: Current E - Potential C

Key Features

- Watch The Video Tour
- Two Large Reception Rooms
- Many Charming Period Features
- Convenient Town Centre Location
- Ground Floor Period Conversion
- Two Generous Double Bedrooms
- Off Street Parking For Two Cars
- Courtyard Garden
- Close To Horsham Station
- Over 1000 SqFt Of Accommodation



TOTAL: 97.4 m² (1,048 sq.ft.)

This floor plan is for illustrative purposes only. It is not drawn to scale. Any measurements, floor areas (including any total floor area), openings and orientations are approximate. No details are guaranteed, they cannot be relied upon for any purpose and do not form any part of any agreement. No liability is taken for any error, omission or misstatement. A party must rely upon its own inspection(s). Powered by www.Propertybox.io